

# Radio Frequency Global

#614, A Dong, Noblereach, 367-5, Yatap-Dong, Seongnam-si  
 tel : 031-702-5813 fax : 031-702-5814  
[www.rfg-korea.co.kr](http://www.rfg-korea.co.kr)

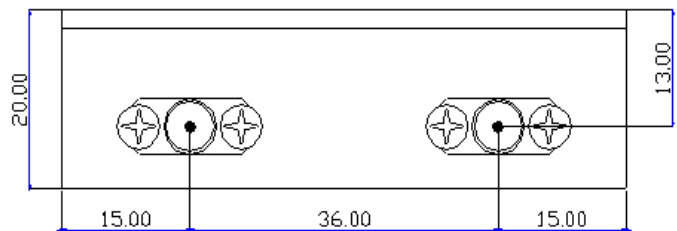
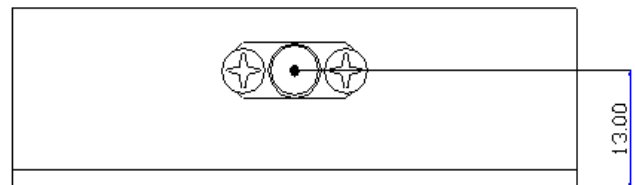
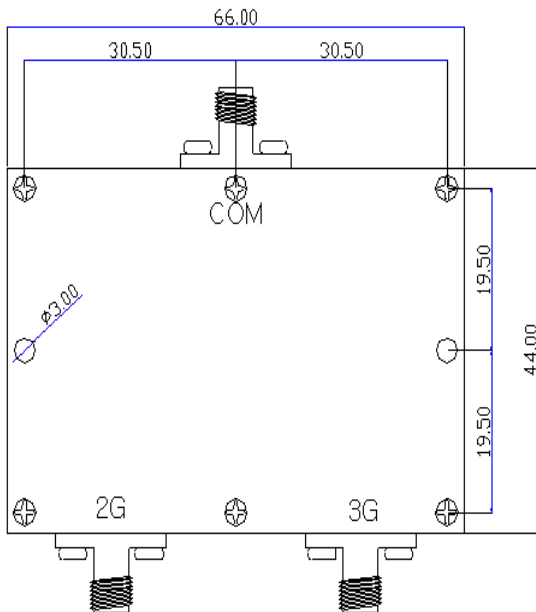


## 1. PART NO : RFG\_2G/3G- Diplexer

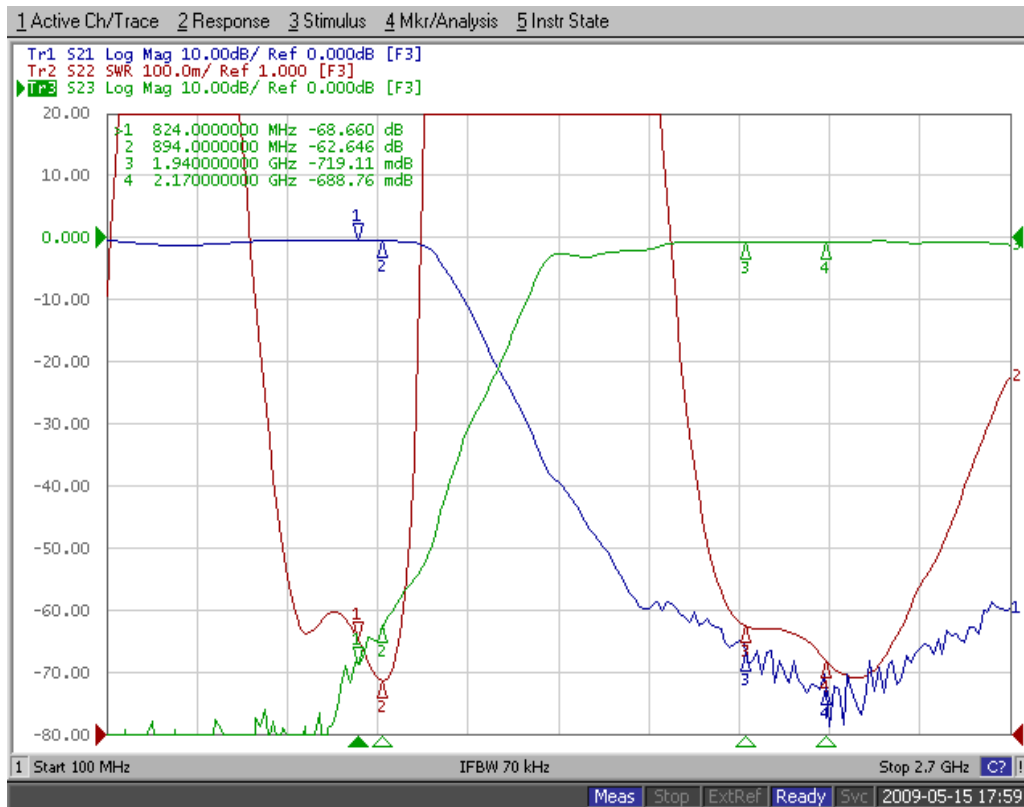
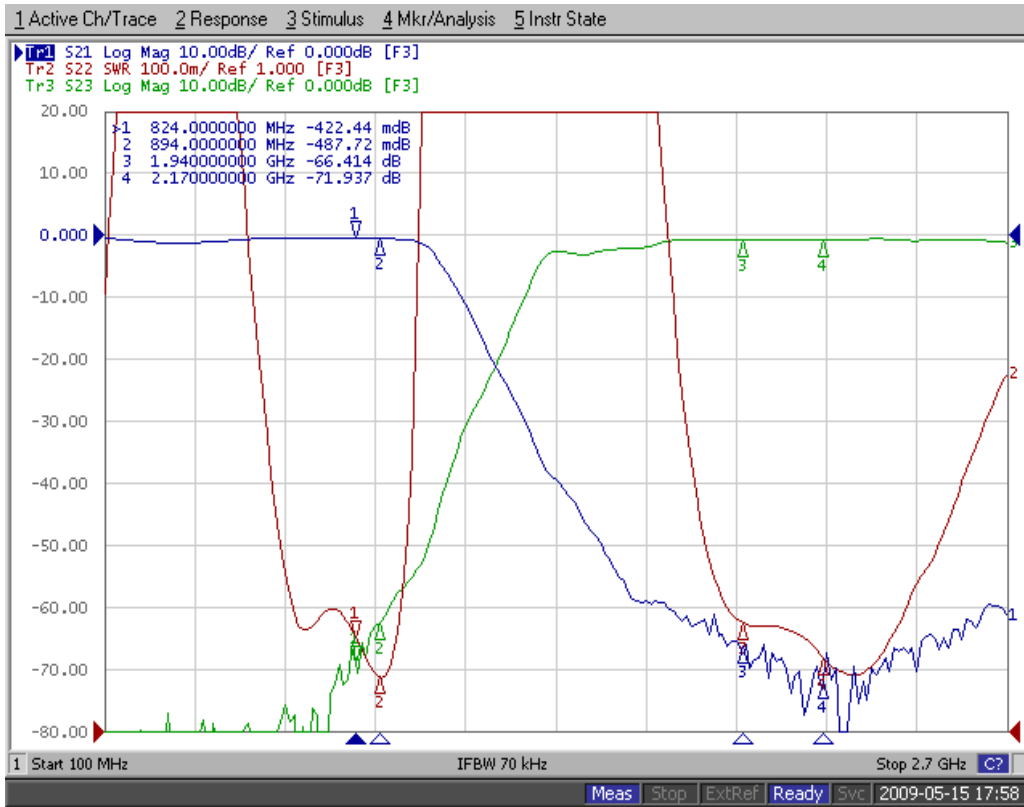
## 2. ELECTRICAL SPECIFICATION

ITEM	SPEC		UNIT
Cut off frequency	894	1920	MHz
Band Width(BW)	824~894	1920~ 2150	MHz
Insertion Loss	0.8	0.8	dB max
Ripple	0.5	0.5	dB max
Return Loss	18.0	18.0	dB min
ATTENUATION  (absolute value)	at RTx 상호간 50		dB min
	at		dB min
	at		dB min
	at		dB min
Operation Temperature Range	-30 ~ +80		℃
Input Power	2.0 max		W
In / Out Impedance	50		Ω

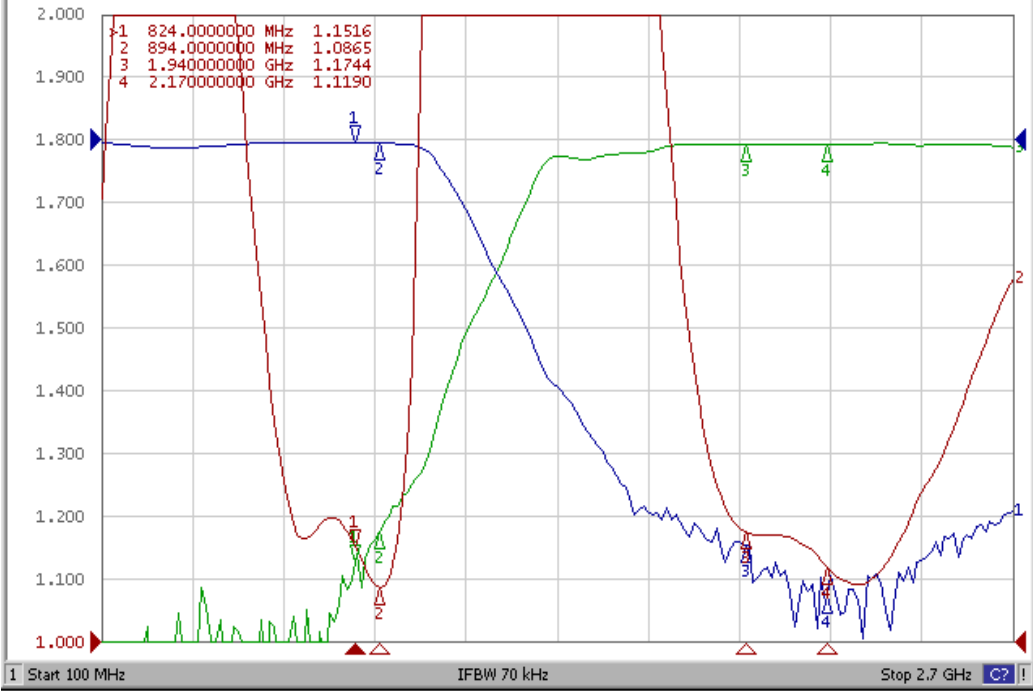
## 3. DIMENSION



## 4. TYPICAL CHARACTERISTIC



Tr1 S21 Log Mag 10.00dB/ Ref 0.000dB [F3]  
Tr2 S22 SWR 100.0m/ Ref 1.000 [F3]  
Tr3 S23 Log Mag 10.00dB/ Ref 0.000dB [F3]



1 Start 100 MHz IFBW 70 kHz Stop 2.7 GHz C?