

R Radio Frequency Global

#614, A Dong, Noblereach, 367-5, Yatap-Dong, Seongnam-si
tel : 031-702-5813 fax : 031-702-5814

www.rfg-korea.co.kr

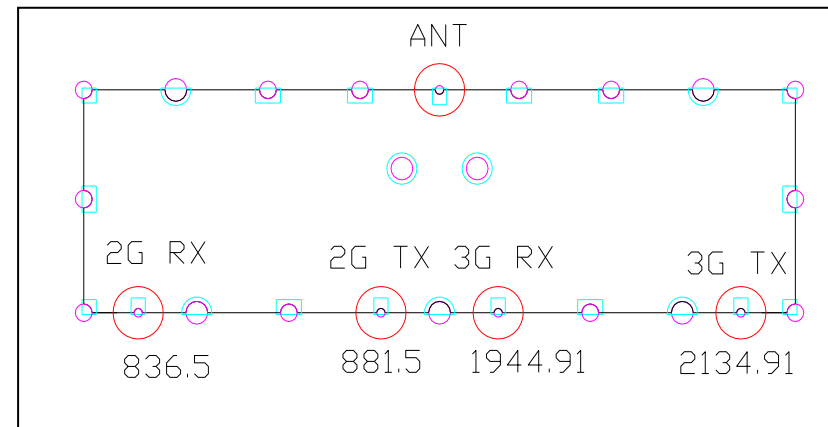
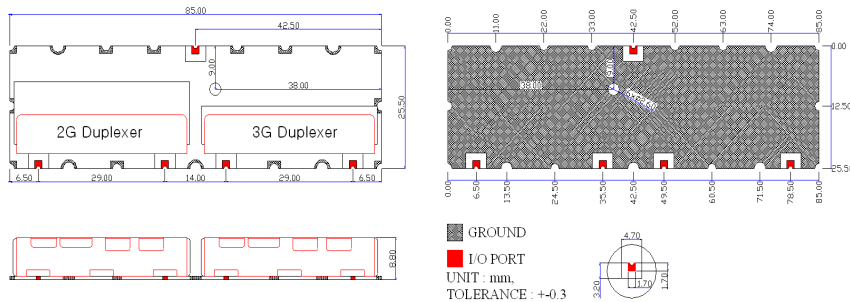


1. PART NO : RFG_CDMA/ WCDMA-Multipelxer

2. ELECTRICAL SPECIFICATION

ITEM	SPEC				UNIT
Center Frequency(Fo)	836.5(port1)	881.5(port2)	1945(port3)	2135(port 4)	MHz
Band Width(BW)	824~849	869~894	1930~1960	2120~2150	MHz
Insertion Loss	2.5	2.5	2.0	2.0	dB max
Ripple	0.8	0.8	0.5	0.5	dB max
Return Loss	18.0	18.0	18.0	18.0	dB min
ATTENUATION (absolute value)	at port 2 55	por1 55	por1 55	por1 55	dB min
	at port 3 55	por3 55	por2 55	por2 55	dB min
	at port 4 55	por4 55	por4 55	por3 55	dB min
	at				dB min
Operation Temperature Range	-30 ~ +80				℃
Input Power	2.0 max				W
In / Out Impedance	50				Ω

3. DIMENSION



4. TYPICAL CHARACTERISTIC

