

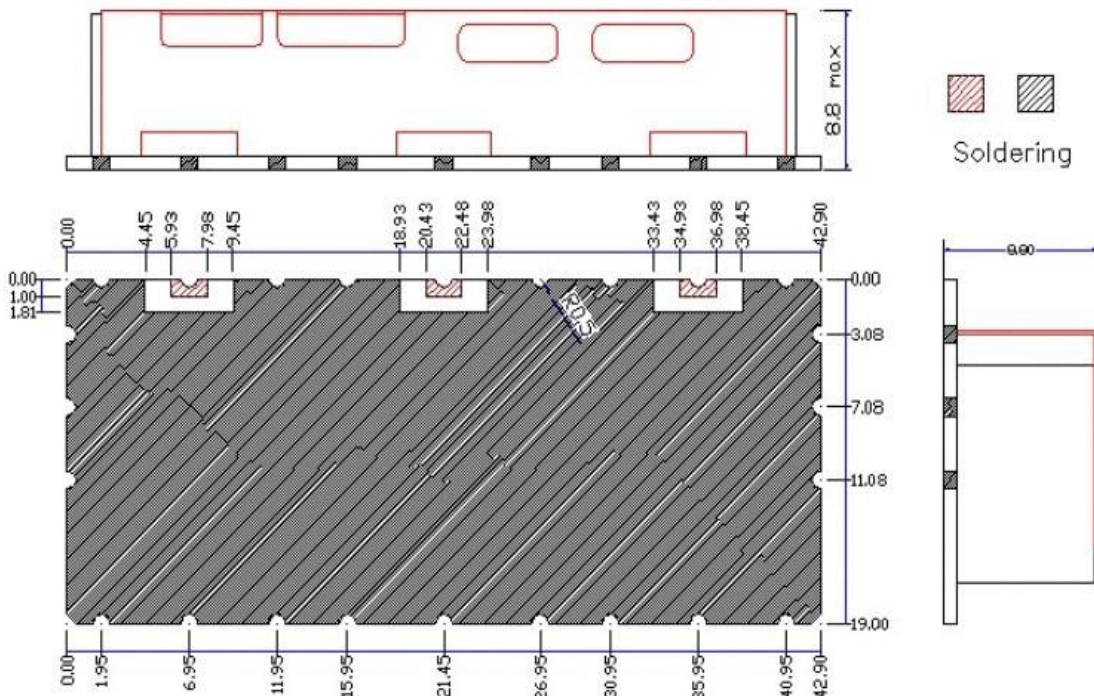


1. PART NO : R8J707F781P18-11A1

2. ELECTRICAL SPECIFICATION

ITEM	SPEC		UNIT
Center Frequency(Fo)	707	781.5	MHz
Band Width(BW)	698~716	776~787	MHz
Insertion Loss	2.0	2.0	dB max
Ripple	0.5	0.5	dB max
Return Loss	18.0	18.0	dB min
ATTENUATION (absolute value)	at RTx 상호간 45		dB min
	at 728~757MHz 23	728~757MHz 23	dB min
	at 799~849MHz 45	799~849MHz 12	dB min
	at DC~600MHz 30	DC~600MHz 40	dB min
	at		dB min
	at		dB min
Operation Temperature Range	-30 ~ +80		℃
Input Power	2.0 max		W
In / Out Impedance	50		Ω

3. DIMENSION



4. TYPICAL CHARACTERISTIC

