

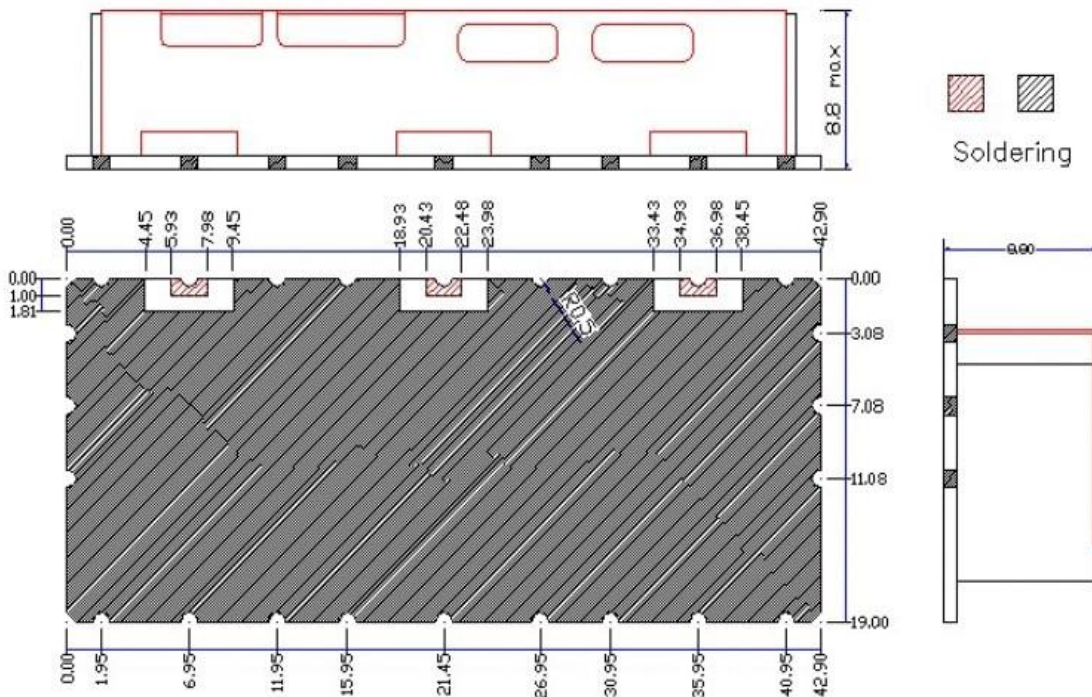


1. PART NO : R8J897F942P35A1

2. ELECTRICAL SPECIFICATION

ITEM	SPEC		UNIT
Center Frequency(Fo)	897.5	942.5	MHz
Band Width(BW)	880~915	925~960	MHz
Insertion Loss	3.5	3.5	dB max
Ripple	2.5	2.5	dB max
Return Loss	15.0	15.0	dB min
ATTENUATION (absolute value)	at RTx \geq 40		dB min
	at 700MHz 30	700MHz 40	dB min
	at 920MHz 12	920MHz 12	dB min
	at 1150MHz 40	1150MHz 35	dB min
Operation Temperature Range	-30 ~ +80		°C
Input Power	2.0 max		W
In / Out Impedance	50		Ω

3. DIMENSION



4. TYPICAL CHARACTERISTIC

