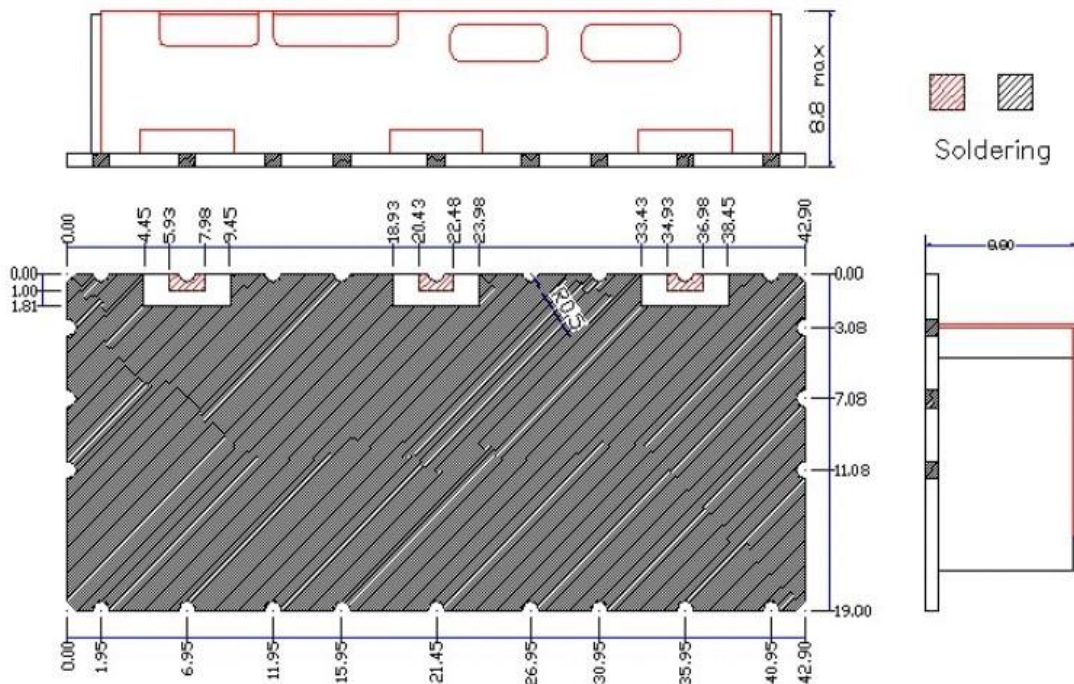


1. PART NO : R8J827F902P44-25A1

2. ELECTRICAL SPECIFICATION

ITEM	SPEC		UNIT
Center Frequency(Fo)	827.5	902.5	MHz
Band Width(BW)	805~849	890~915	MHz
Insertion Loss	2.0	2.0	dB max
Ripple	0.5	0.5	dB max
Return Loss	15.0	15.0	dB min
ATTENUATION (absolute value)	at RTx 상호간 40		dB min
	at		dB min
	at		dB min
	at		dB min
Operation Temperature Range	-30 ~ +80		℃
Input Power	2.0 max		W
In / Out Impedance	50		Ω

3. DIMENSION



4. TYPICAL CHARACTERISTIC

