

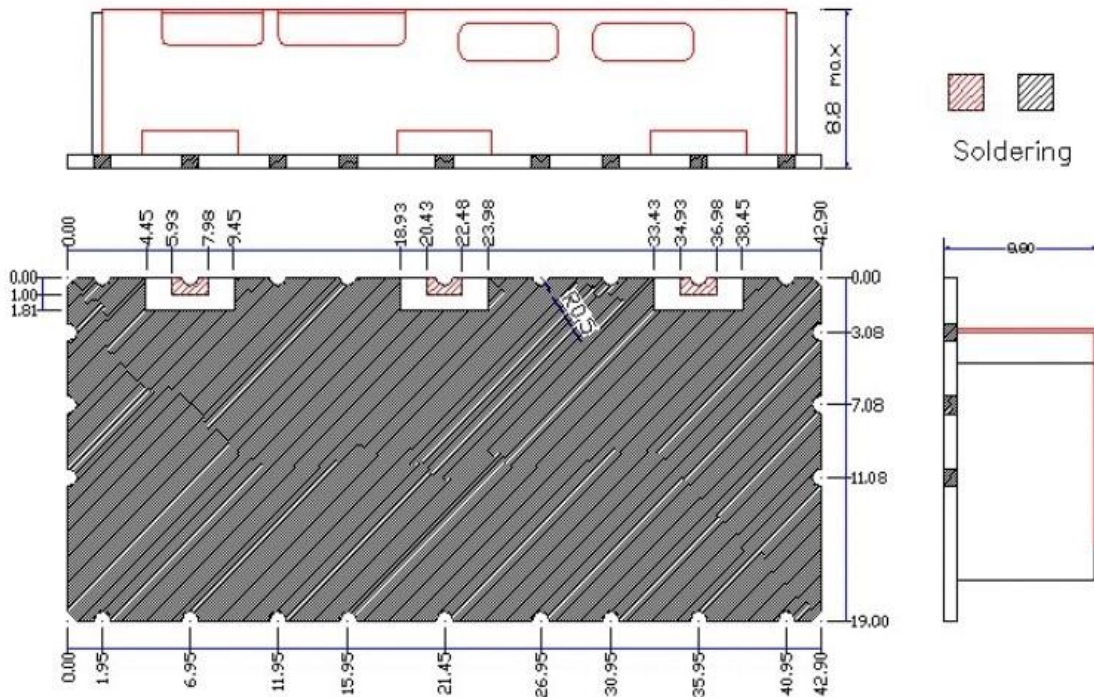


1. PART NO : R8J836F881P25A1

2. ELECTRICAL SPECIFICATION

ITEM	SPEC		UNIT
Center Frequency(Fo)	836.5	881.5	MHz
Band Width(BW)	824~849	869~894	MHz
Insertion Loss	2.5	2.5	dB max
Ripple	0.8	0.8	dB max
Return Loss	18.0	18.0	dB min
ATTENUATION (absolute value)	at RTx 상호간 50		dB min
	at		dB min
	at		dB min
	at		dB min
Operation Temperature Range	-30 ~ +80		℃
Input Power	2.0 max		W
In / Out Impedance	50		Ω

3. DIMENSION



4. TYPICAL CHARACTERISTIC

