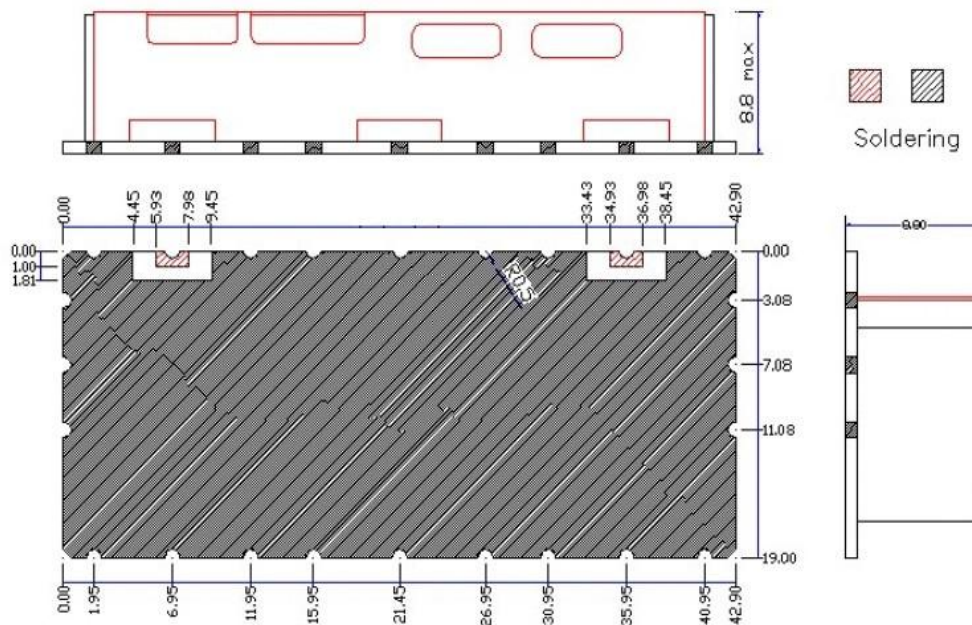


1. PART NO : R8J782P10C1

2. ELECTRICAL SPECIFICATION

ITEM	SPEC	UNIT	
Center Frequency(Fo)	782	MHz	
Band Width(BW)	777~787	MHz	
Insertion Loss	5.0	dB max	
Ripple	1.5	dB max	
Return Loss	15.0	dB min	
ATTENUATION (absolute value)	at 771MHz	30.0	dB min
	at 793MHz	30.0	dB min
	at 1310MHz	45.0	dB min
	at MHz		dB min
Operation Temperature Range	-30 ~ +80	℃	
Input Power	2.0 max	W	
In / Out Impedance	50	Ω	

3. DIMENSION



4. TYPICAL CHARACTERISTIC

